

KATE BANAZI  
SIGNATURE STUDIO



DESIGNER COLLABORATION SERIES  
VOLUME THREE

*Signature*



KATE BANAZI  
SIGNATURE STUDIO

Kate Banazi is a diverse multi-faceted artist, known for her practice with printmaking, sculpture and painting. She delves into the realms of light, colour and graphic motifs in an experimental and instinctively unpredictable way. With a deep appreciation for relationships, the body in space, movement and shadows, abstracting them to linear shapes, repeating overlaying and mesmeric, creating an entrancing visual effect teasing the viewer to take a closer look to reveal more.

KATE BANAZI

# THE UNTETHERED COLLECTION

Singular elements are dissected and distorted to recreate and reframe life drawings and self portraits. The “Untethered Collection” interprets original designs which often appear as though they are floating in space into a grounded and succinct compilation. Use as a singular masterpiece or combined, the Collection features 11 designs in 5 colourways across 4 carpet mediums.

The Designer Collaboration Series is an opportunity to select from an exclusive range of floor coverings focussed on Kate Banazi’s unique design principles to create a range of geometric and contemporary works of art, made to last and be admired over time. Designs and colour schemes have been curated by Signature Studio and are all available to order with minimum order quantities and lead times, as everything is made to order for your space.



AXMINSTER DESIGN

# DIGITAL LANDSCAPE



CM-WN-2497-0004

AXMINSTER DESIGN

# DIGITAL LANDSCAPE

## SPECIFICATIONS

Weight: 43oz  
 Carpet Width: 400cm  
 Pitch & Beatup: 7 x 9  
 Pile Height: 8mm  
 Yarn Type: 80% Wool / 20% Nylon  
 Yarn Construction: 2ply / 740tex

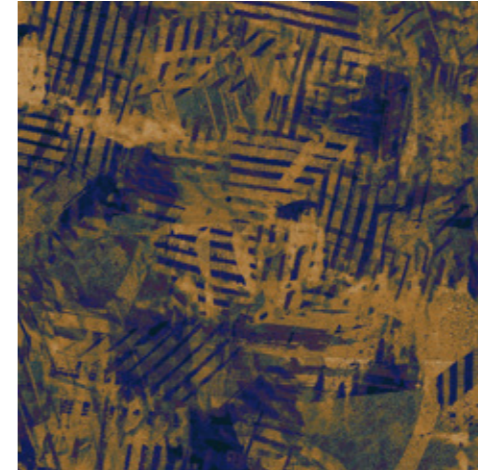
## DIMENSIONS

Carpet Width: 400cm Set  
 Repeat Width: 400cm Set  
 Repeat Length: 400cm

A dynamic blend of vibrant colours, sleek lines and abstract patterns where the natural world merges with technology and exists in perfect harmony. An exploration of the digital ecosystem originally created through silk screen textures to celebrate layering and tactility, captured by the enduring quality of Axminster carpet.

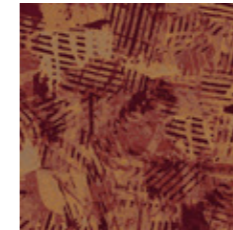


**INK**  
 CM-WN-2497-0004



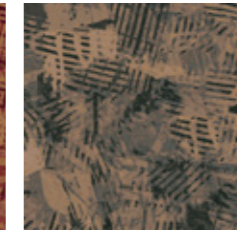
S432L S29B	S107K S10G	S439L S29J	S439M S30J	S215E S05Q
S440D S22K	S321L S17L	S322L S17M	S213C S03N	S108J S09H

**GARNET**  
 CM-WN-2497-0054



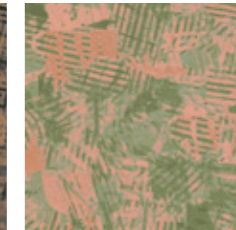
S541E S23L	S214K S10P	S541F S24L	S107K S10G	S214K S10P	S107L S11G
S541M S30L	S214C S03P	S549D S22U	S107M S12G	S104C S03D	S107J S09G
S216K S10R	S549C S21U	S212C S03M	S215J S09Q	S109J S09J	S110B S02K
S215J S09Q			S214J S09P		S550B S20V

**NOCTURNE**  
 CM-WN-2497-0064



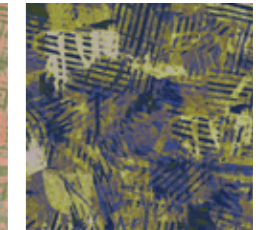
S107K S10G	S214K S10P	S107L S11G	S329H S14U	S327G S13S	S328J S15T
S107M S12G	S104C S03D	S107J S09G	S329J S15U	S549A S19U	S328H S14T
S215J S09Q	S109J S09J	S110B S02K	S217H S08S	S549B S20U	S548A S19T
S214J S09P			S550B S20V		

**SHRUB**  
 CM-WN-2497-0034



S329H S14U	S327G S13S	S328J S15T	S104K S10D	S440C S21K	S329L S17U
S329J S15U	S549A S19U	S328H S14T	S439L S29J	S322J S15M	S440K S28K
S217H S08S	S549B S20U	S548A S19T	S322K S16M	S323K S16N	S321A S13A
S550B S20V			S212J S09M		

**VIRIDIS**  
 CM-WN-2497-0044



S104K S10D	S440C S21K	S329L S17U	S104K S10D	S440C S21K	S329L S17U
S439L S29J	S322J S15M	S440K S28K	S439L S29J	S322J S15M	S440K S28K
S322K S16M	S323K S16N	S321A S13A	S322K S16M	S323K S16N	S321A S13A
S212J S09M			S212J S09M		

AXMINSTER DESIGN

# NETWORKS



CM-WN-2497-0003

AXMINSTER DESIGN  
**NETWORKS**

**SPECIFICATIONS**

Weight: 43oz  
 Carpet Width: 400cm  
 Pitch & Beatup: 7 x 9  
 Pile Height: 8mm  
 Yarn Type: 80% Wool / 20% Nylon  
 Yarn Construction: 2ply / 740tex

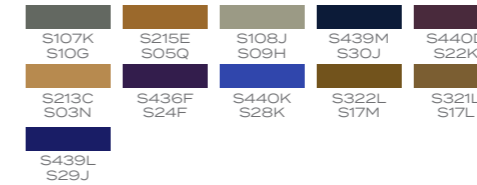
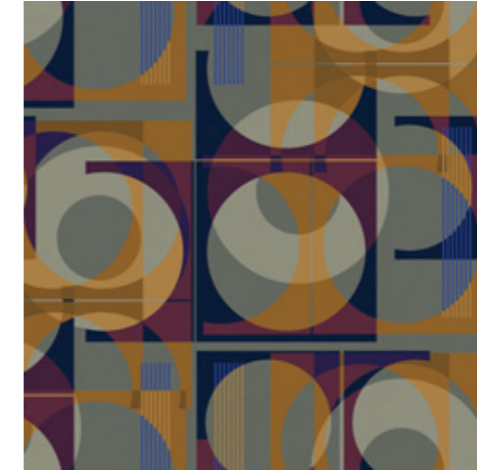
**DIMENSIONS**

Carpet Width: 400cm Set  
 Repeat Width: 200cm Set  
 Repeat Length: 158cm

With every glance, new layers of complexity reveal themselves, offering a kaleidoscopic journey through boundless depths of colour and contour. The wool yarn interconnects the qualities of rich and vibrant colour, with properties of strength and durability.



**INK**  
CM-WN-2497-0003



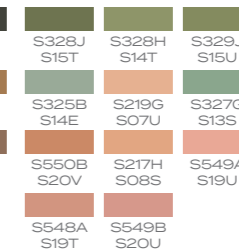
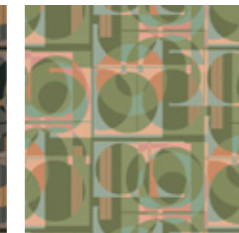
**GARNET**  
CM-WN-2497-0053



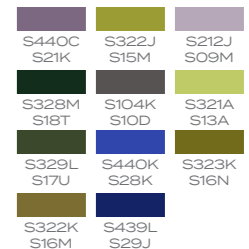
**NOCTURNE**  
CM-WN-2497-0063



**SHRUB**  
CM-WN-2497-0033



**VIRIDIS**  
CM-WN-2497-0043



AXMINSTER DESIGN

# PULLSAR

CM-WN-2497-0002





AXMINSTER DESIGN

# PULSAR

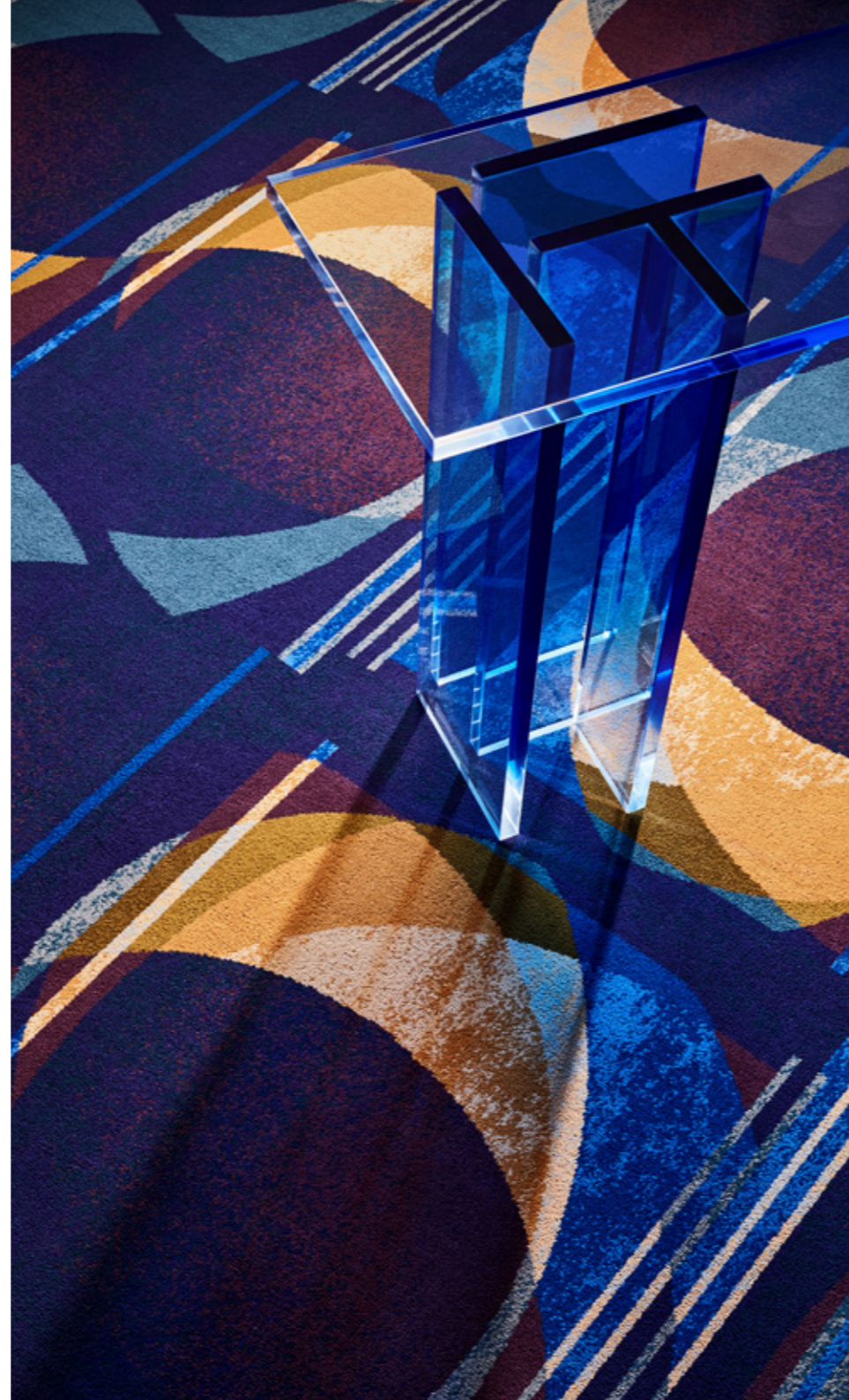
## SPECIFICATIONS

Weight: 43oz  
 Carpet Width: 400cm  
 Pitch & Beatup: 7 x 9  
 Pile Height: 8mm  
 Yarn Type: 80% Wool / 20% Nylon  
 Yarn Construction: 2ply / 740tex

## DIMENSIONS

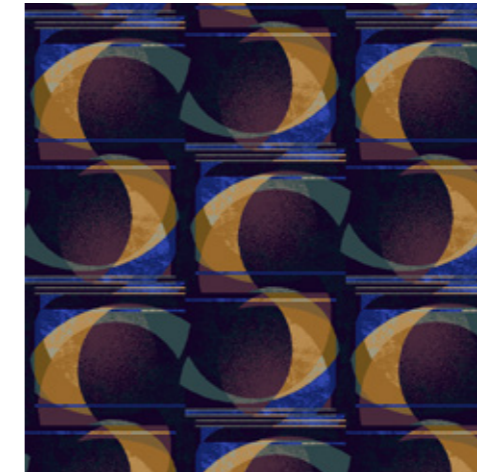
Carpet Width: 400cm Set  
 Repeat Width: 100cm Drop  
 Repeat Length: 165cm

With blurred and translucent irregularity, this Woven Axminster carpet explores pattern repeat with a sense of movement and fluidity. The design captures the ethereal beauty and tranquility of underwater dreamscape, casting dappled impressions of the oceans depths.



## INK

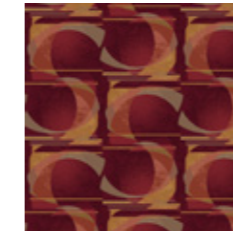
CM-WN-2497-0002



S436F S24F	S440D S22K	S439M S30J	S215E S05Q	S432L S29B
S439L S29J	S213C S03N	S107K S10G	S440K S28K	S322L S17M
S108J S09H	S321L S17L			

## GARNET

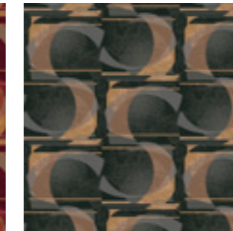
CM-WN-2497-0052



S541F S24L	S541E S23L	S541M S30L	S107M S12G	S107K S10G	S107L S11G
S549D S22U	S214K S10P	S214C S03P	S214K S10P	S107J S09G	S110B S02K
S549C S21U	S215J S09Q	S212C S03M	S215J S09Q	S104J S09D	S109B S02J
S216K S10R	S217J S09S	S213D S04N	S109J S09J	S214J S09P	S104C S03D

## NOCTURNE

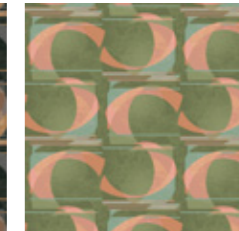
CM-WN-2497-0062



S328J S15T	S328H S14T	S329J S15U	S436F S24F	S329L S17U	S328M S18T
S548A S19T	S550B S20V	S327G S13S	S322J S15M	S104K S10D	S439L S29J
S217H S08S	S549B S20U	S325B S14E	S321A S13A	S440C S21K	S440K S28K
S549A S19U	S219G S07U	S329H S14U	S323K S16N	S212J S09M	S322K S16M

## SHRUB

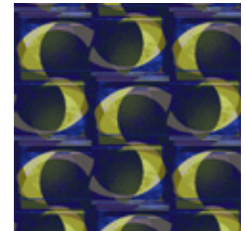
CM-WN-2497-0032



S328J S15T	S328H S14T	S329J S15U	S436F S24F	S329L S17U	S328M S18T
S548A S19T	S550B S20V	S327G S13S	S322J S15M	S104K S10D	S439L S29J
S217H S08S	S549B S20U	S325B S14E	S321A S13A	S440C S21K	S440K S28K
S549A S19U	S219G S07U	S329H S14U	S323K S16N	S212J S09M	S322K S16M

## VIRIDIS

CM-WN-2497-0042



S328J S15T	S328H S14T	S329J S15U	S436F S24F	S329L S17U	S328M S18T
S548A S19T	S550B S20V	S327G S13S	S322J S15M	S104K S10D	S439L S29J
S217H S08S	S549B S20U	S325B S14E	S321A S13A	S440C S21K	S440K S28K
S549A S19U	S219G S07U	S329H S14U	S323K S16N	S212J S09M	S322K S16M



# kate banazi

"It kind of feels luxurious and it feels really textural, it's almost kind of like taking a flat silkscreen print, and I can feel the layers on the silkscreen print. But then it's been amplified and it's kind of delicious."



Kate Banazi

HAND TUFTED RUG

# ROOF GRIDS

CM-HT-2497-0009



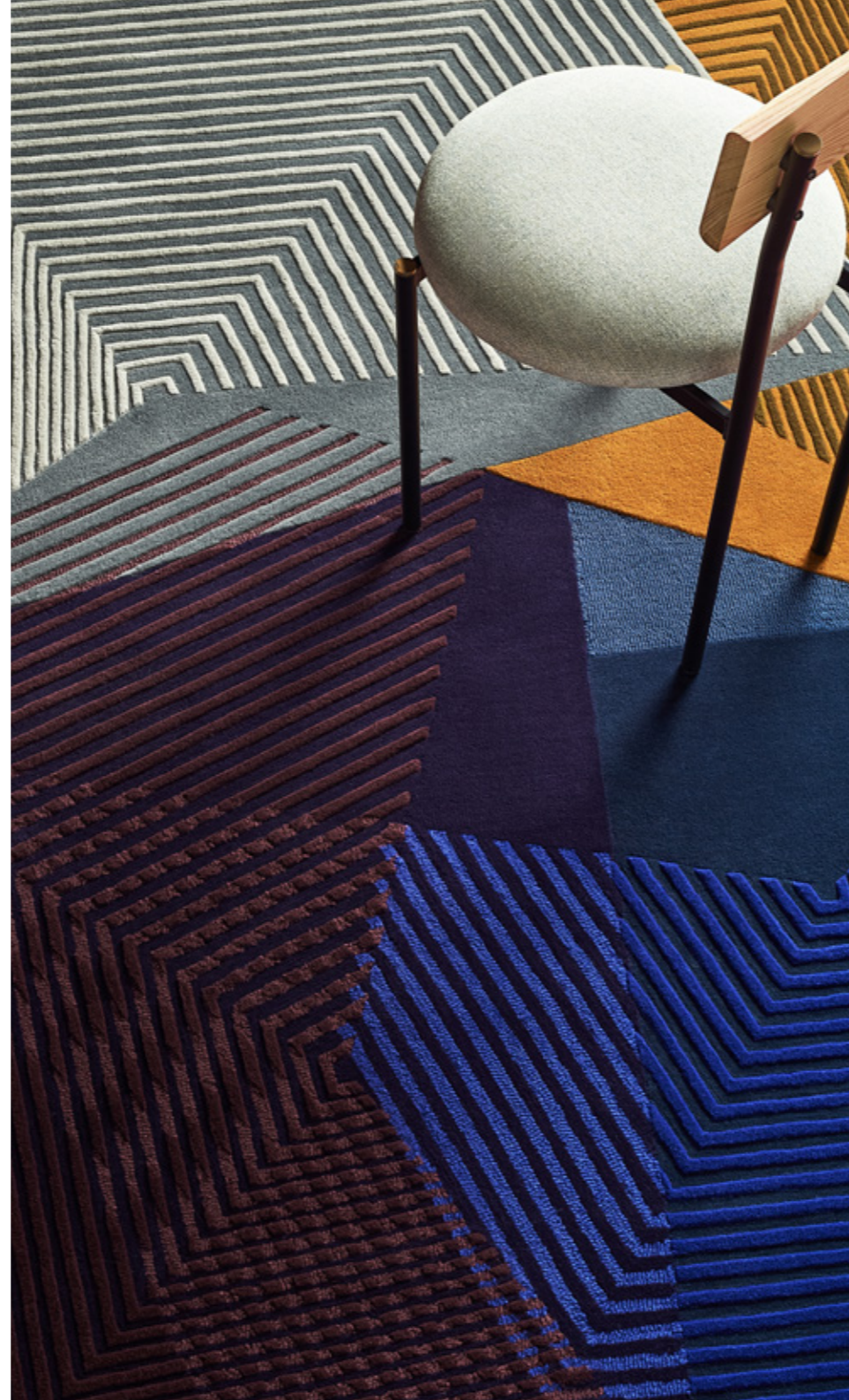
HAND TUFTED RUG

# ROOF GRIDS

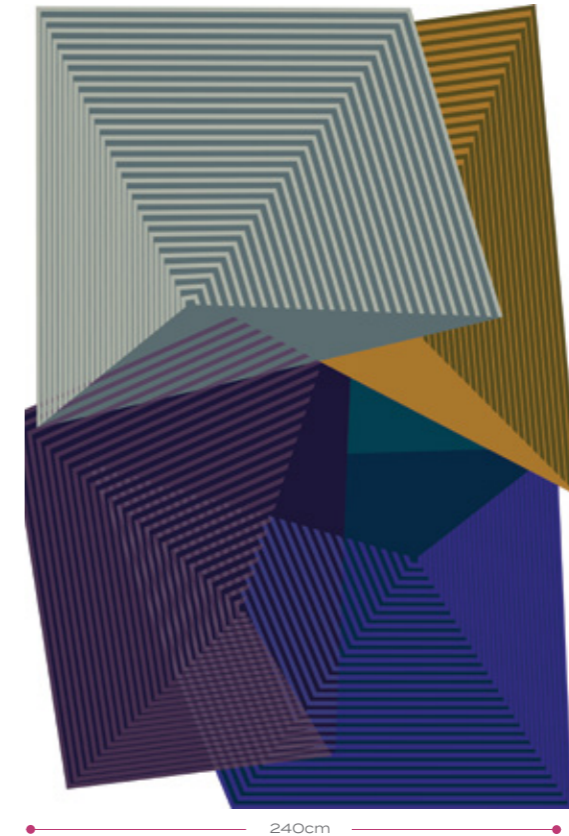
## SPECIFICATIONS

Quality:	88oz
Pile Height:	Multi Level Cut Multi Level Loop
Yarn:	NZ Wool
Cut Pile:	7mm 8mm 9mm 10mm 12mm
Loop Pile:	7mm 8mm

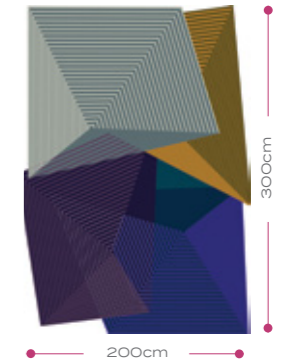
A geometric masterpiece, this high quality hand-tufted rug is an interaction of colour, form and line creating an illusion of depth and dimension. The angled edges accentuate the inflections and intricacies of the formation - the end result - a roof on the floor. Made from New Zealand Wool with varying pile heights highlighting the successive details of the design, this rug is sure to be a showstopper.



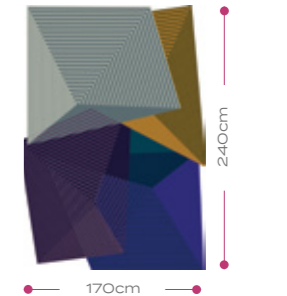
INK  
CM-HT-2497-0039



INK  
CM-HT-2497-0029



INK  
CM-HT-2497-0009

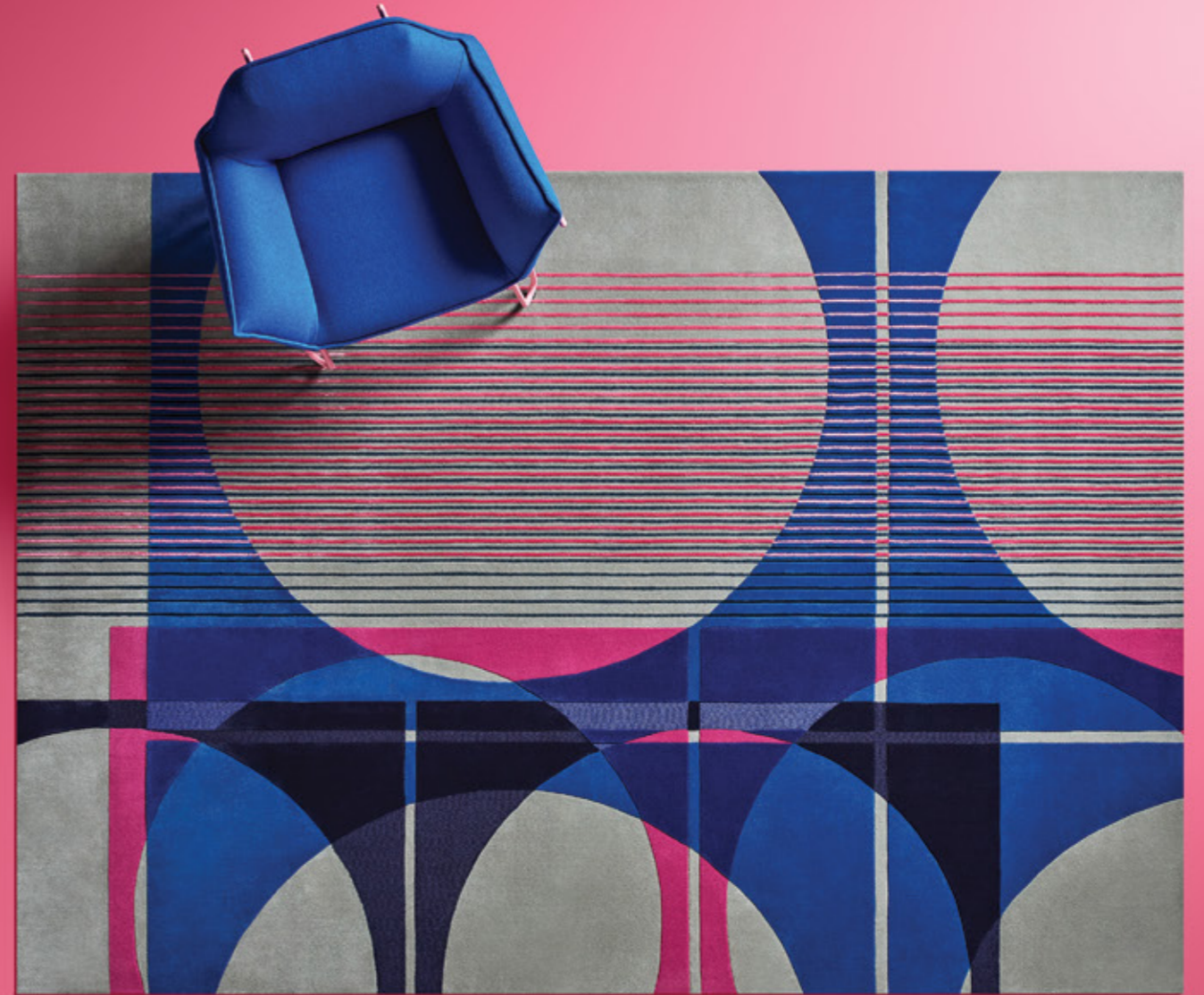


## NEW ZEALAND WOOL

9mm Cut Pile PA-1101	12mm Cut Pile CE-095	10mm Cut Pile AC-393	9mm Cut Pile OH-888	10mm Cut Pile YA-731	8mm Cut Pile PF-1096	10mm Cut Pile PH1108	7mm Cut Pile BP18300A
8mm Loop Pile PA-1101						8mm Loop Pile PH-1108	7mm Loop Pile BP18300A

HAND TUFTED RUG

# APERTURE



CM-HT-2497-0018

HAND TUFTED RUG

# APERTURE

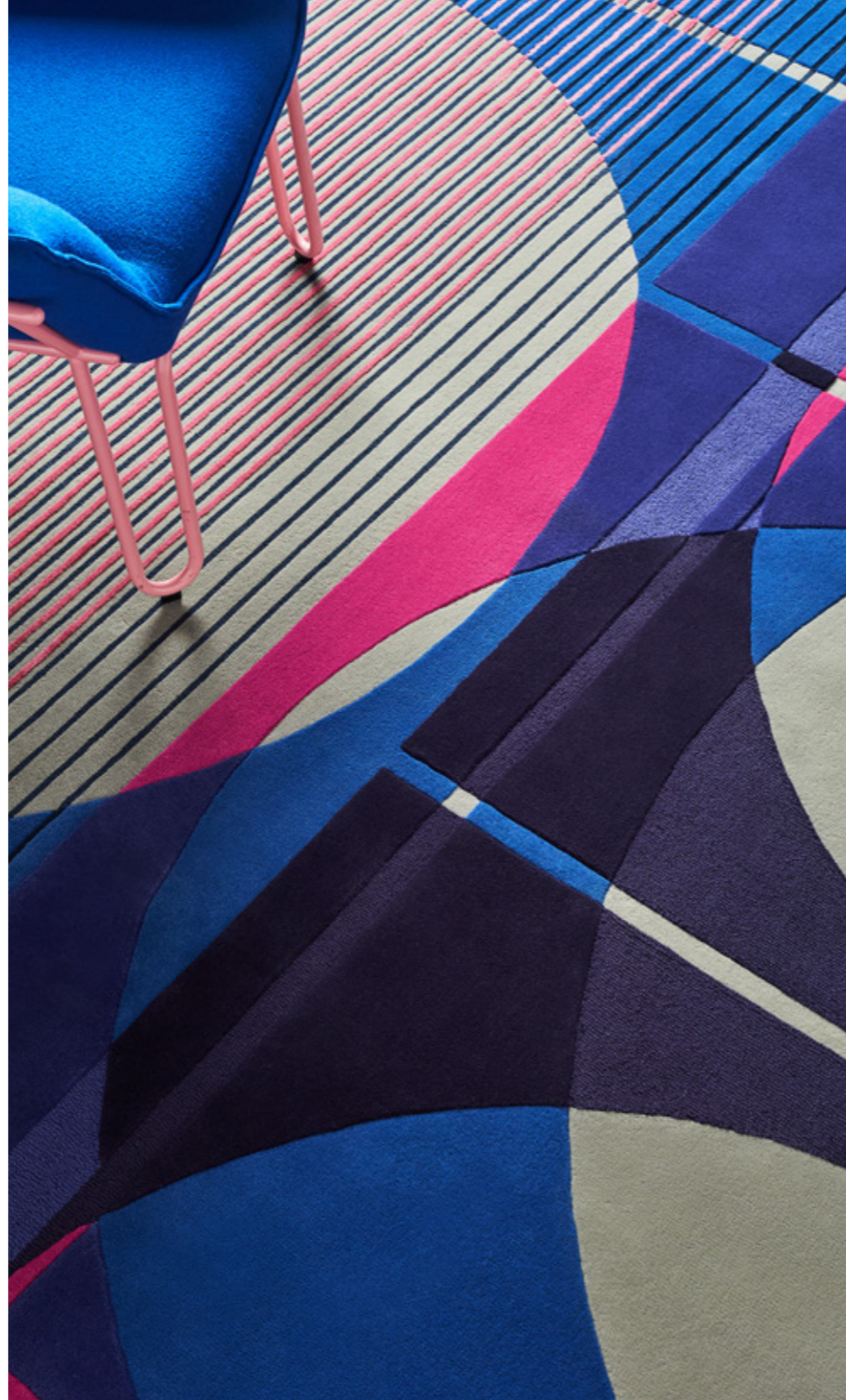
## SPECIFICATIONS

Quality: 88oz  
Pile Height: Multi Level Cut  
Multi Level Loop

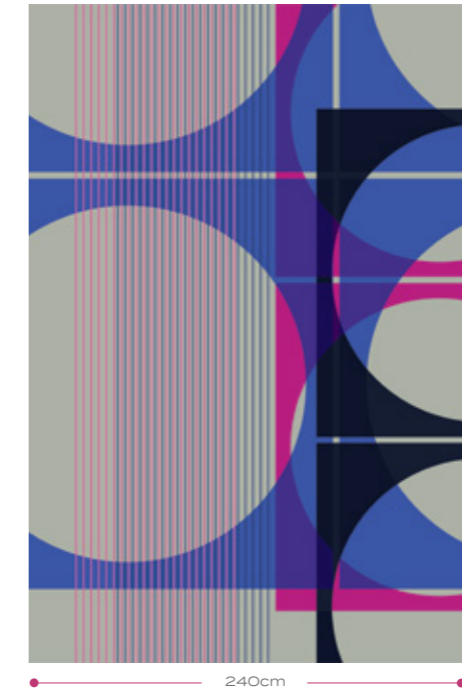
Yarn: NZ Wool  
Cut Pile: 7mm  
9mm  
11mm  
Loop Pile: 7mm  
9mm

Yarn: High Lustre Nylon  
Cut Pile: 9mm  
Loop Pile: 9mm

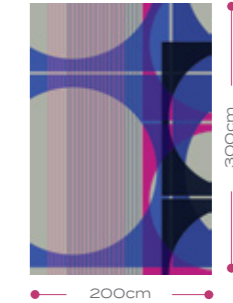
Inspired by screenprinting and the way colour can be manipulated with overlays, a simple play of fine lines, layered shapes and perfectly placed voids is then underscored by a deliberate cut and loop construction. Hinting at elements of transparency and opacity often achieved through silkscreen ink, this hand tufted rug, is luxuriously crafted, and the feature design of this collection for obvious reasons.



POP  
CM-HT-2497-0018



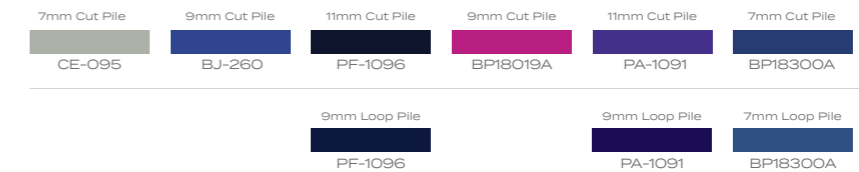
POP  
CM-HT-2497-0028



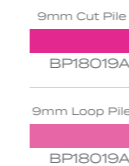
POP  
CM-HT-2497-0008



## NEW ZEALAND WOOL



## HIGH LUSTRE NYLON



HAND TUFTED RUG

# NETWORKS



CM-HT-2497-0005

HAND TUFTED RUG  
**NETWORKS**

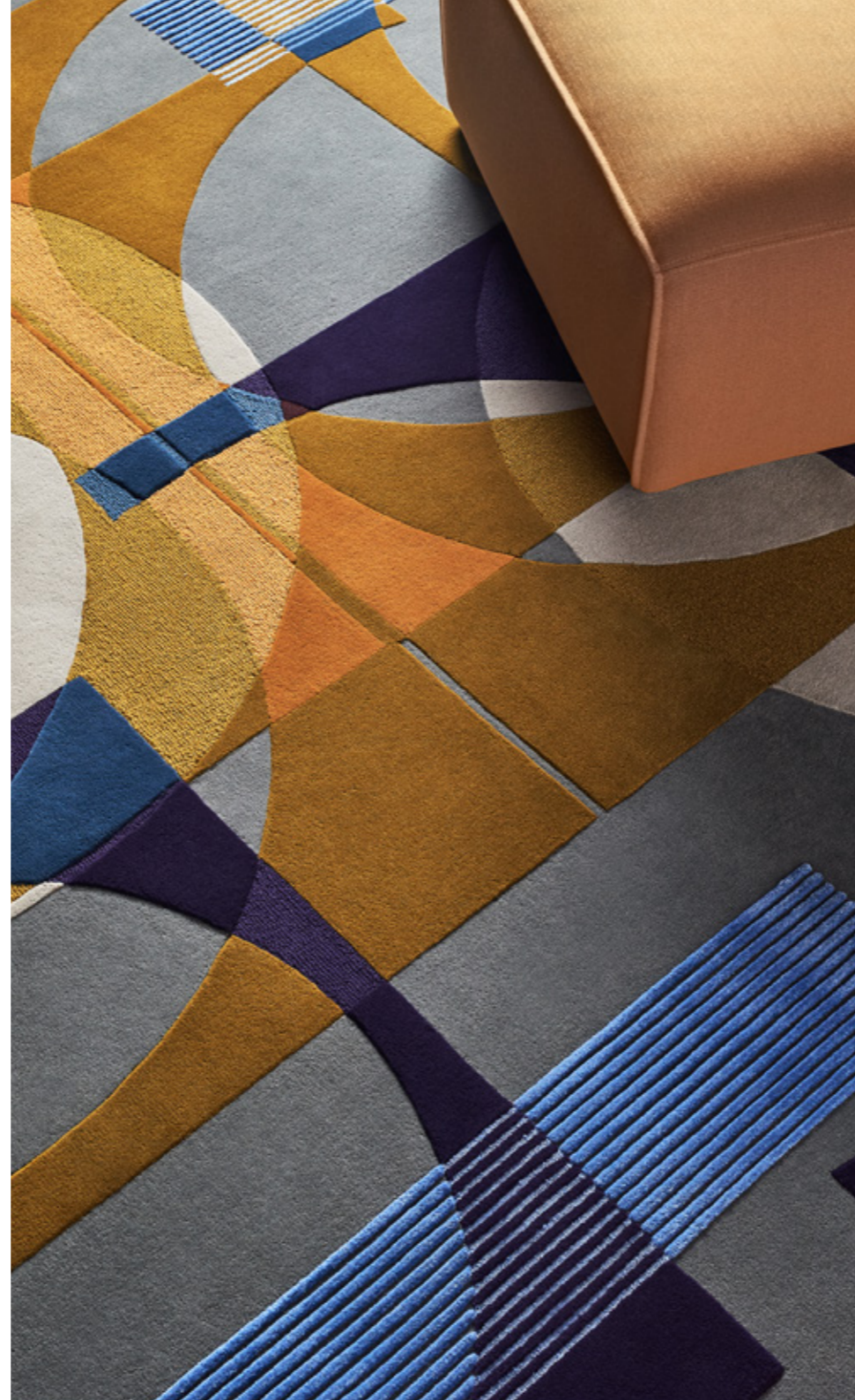
**SPECIFICATIONS**

Quality: 88oz  
 Pile Height: Multi Level Cut  
 Multi Level Loop

Yarn: NZ Wool  
 Cut Pile: 7mm  
 9mm  
 11mm  
 Loop Pile: 9mm

Yarn: High Lustre Nylon  
 Cut Pile: 11mm  
 Loop Pile: 9mm

A collage of overlapping shapes and shades creates a mirage of weight and visual interest. Utilising assorted mediums and harnessing each of those differing qualities, the outcome is a perfect asymmetry of colour which is both grounding and captivating. Light reflects off the contrasting yarns and textures to further emphasize the design.



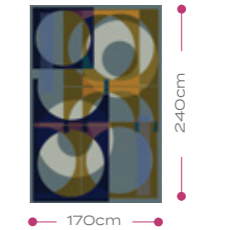
**INK**  
 CM-HT-2497-0005



**INK**  
 CM-HT-2497-0015



**INK**  
 CM-HT-2497-0025



**NEW ZEALAND WOOL**

7mm Cut Pile AC-393	9mm Cut Pile CE-095	9mm Cut Pile YE-735	9mm Cut Pile OH-888	9mm Cut Pile PH-1108	11mm Cut Pile PF-1096	11mm Cut Pile BG-257
	9mm Loop Pile YE-735	9mm Loop Pile OH-888	9mm Loop Pile PH-1108	9mm Loop Pile PF-1096	9mm Loop Pile BG-257	

**HIGH LUSTRE NYLON**

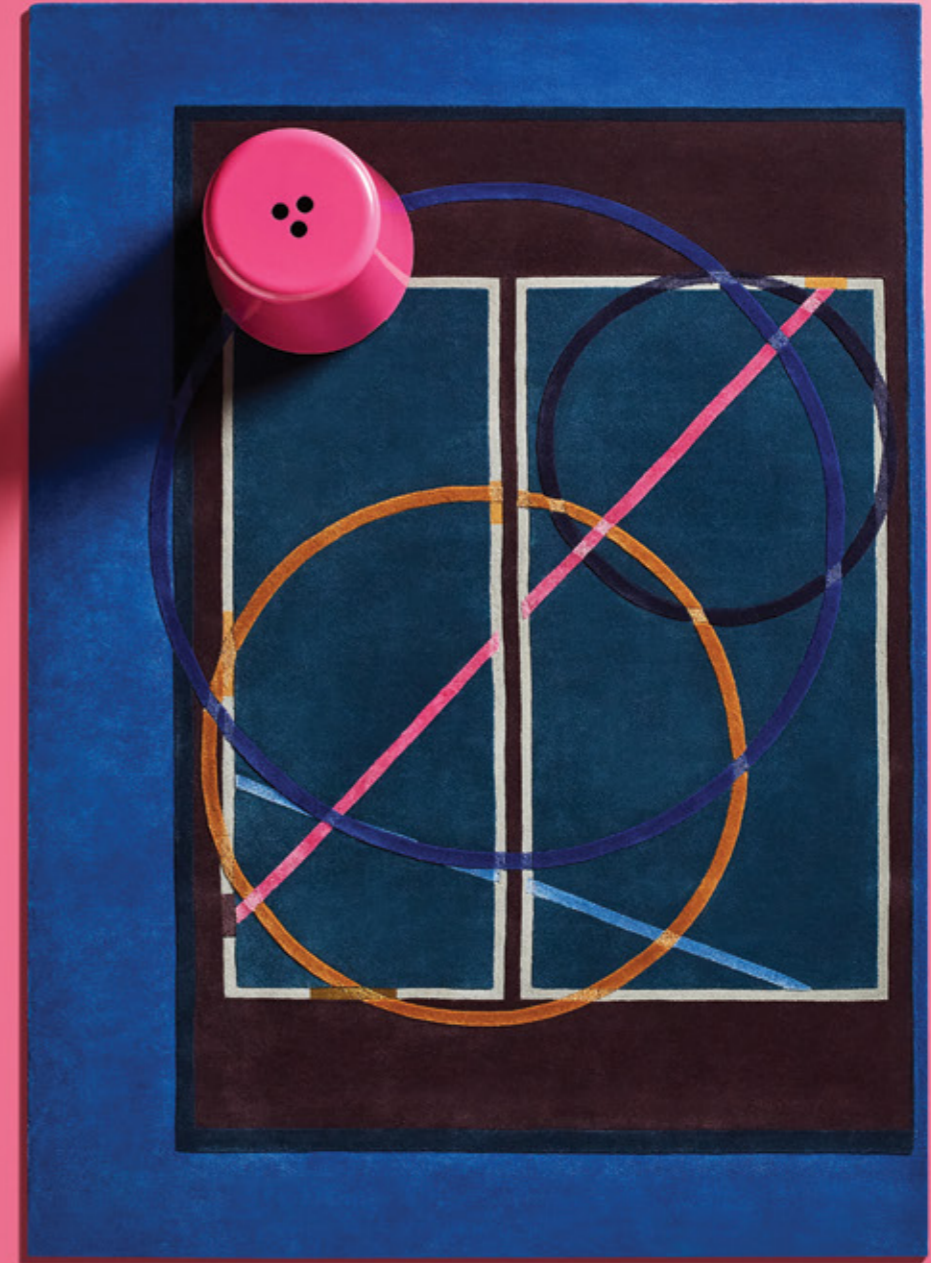
11mm Cut Pile BJ-260
9mm Loop Pile BJ-260



HAND TUFTED RUG

# MAPS

CM-HT-2497-0013



HAND TUFTED RUG  
**MAPS**

**SPECIFICATIONS**

Quality: 88oz  
 Pile Height: Multi Level Cut  
 Multi Level Loop

Yarn: NZ Wool  
 Cut Pile: 7mm  
 9mm  
 11mm  
 Loop Pile: 7mm  
 10mm

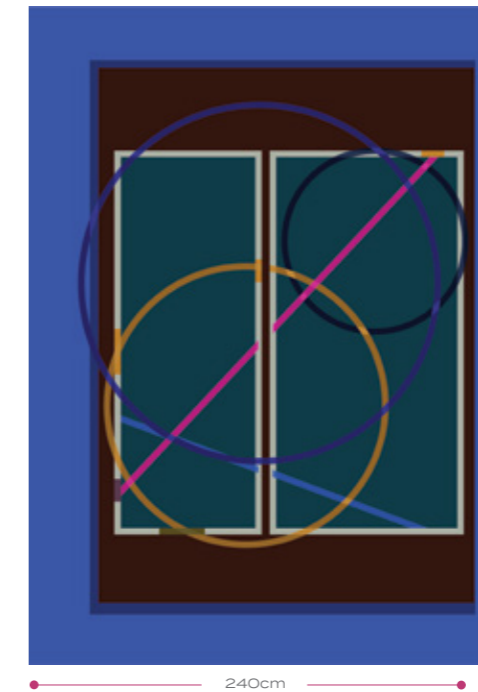
Yarn: High Lustre Nylon  
 Cut Pile: 9mm  
 Loop Pile: 7mm  
 9mm

Maps, routes and boundaries. Lines plotting a passage from one point to another.

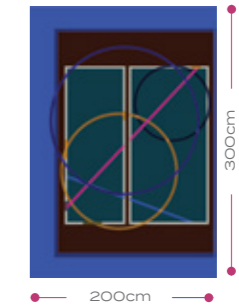
Graphic notations intermingle with irregular scale and placement resulting in unexpected margins of space, turning art designed for a wall into art designed for a floor.



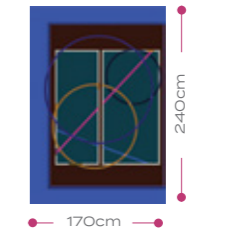
**JEWEL**  
 CM-HT-2497-0043



**JEWEL**  
 CM-HT-2497-0023



**JEWEL**  
 CM-HT-2497-0013



**NEW ZEALAND WOOL**

7mm Cut Pile BJ-260	11mm Cut Pile BP18300A	9mm Cut Pile PH-1108	7mm Cut Pile CE-095	9mm Cut Pile BG-257	11mm Cut Pile PA-1101	11mm Cut Pile PF-1096	11mm Cut Pile OH-888	7mm Cut Pile YE-735	7mm Cut Pile OH-908
10mm Loop Pile PA-1101	10mm Loop Pile PF-1096	10mm Loop Pile OH-888	7mm Loop Pile PH-1108	7mm Loop Pile YE-735					

**HIGH LUSTRE NYLON**

9mm Cut Pile BP18019A	9mm Cut Pile BJ-260
9mm Loop Pile BP18019A	7mm Loop Pile BJ-260

DYE INJECTION BROADLOOM



# DIGITAL LANDSCAPE

CM-DI-2497-0020

DYE INJECTION BROADLOOM

# DIGITAL LANDSCAPE

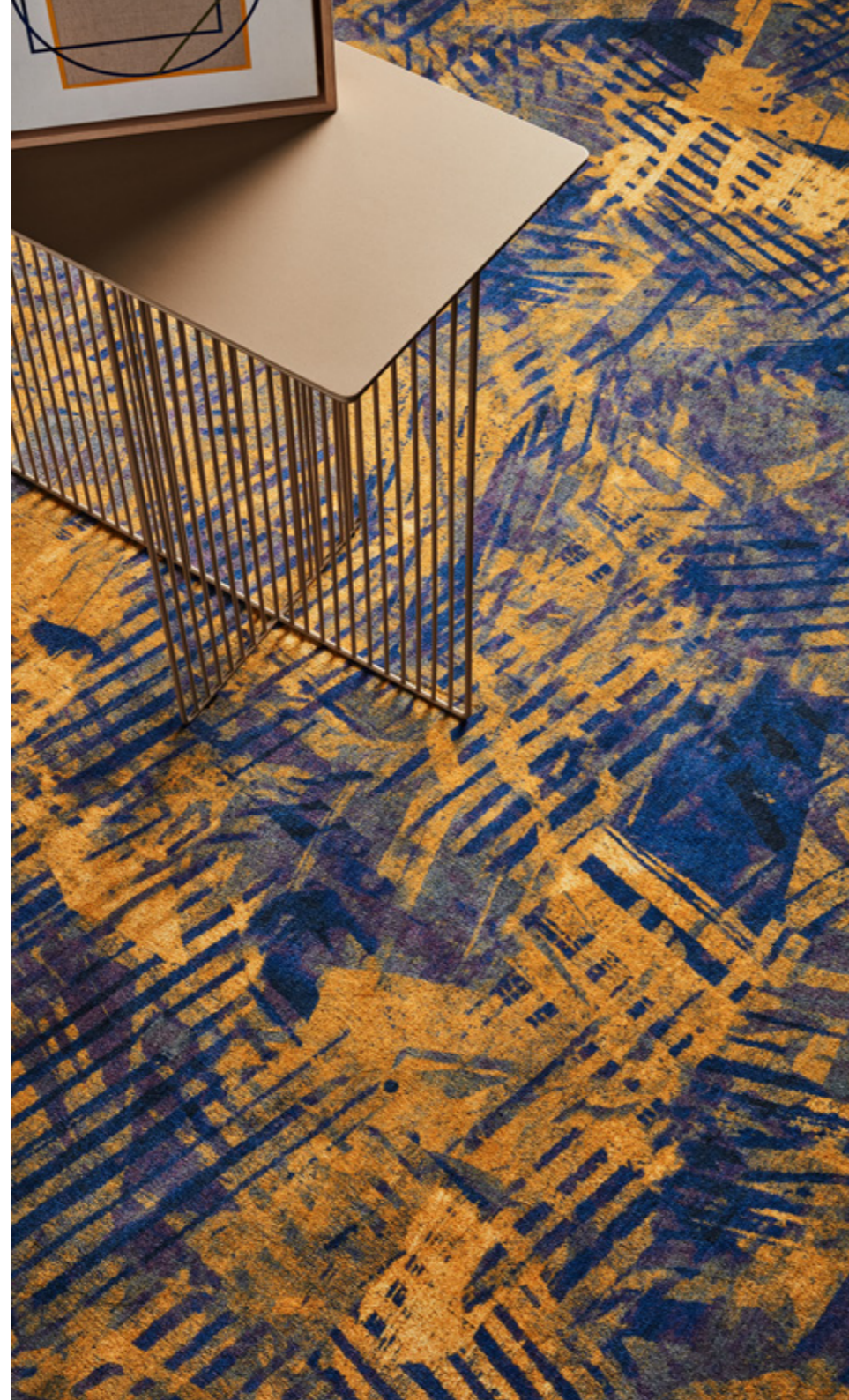
## SPECIFICATIONS

Weight: 38oz  
Width: 400cm  
Pile Height: 7mm  
Yarn Type: 100% Nylon 6  
Yarn Construction: Cut Pile

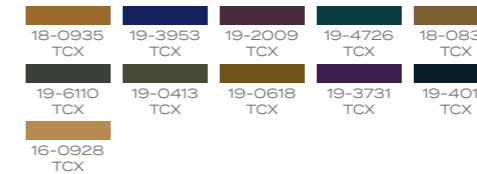
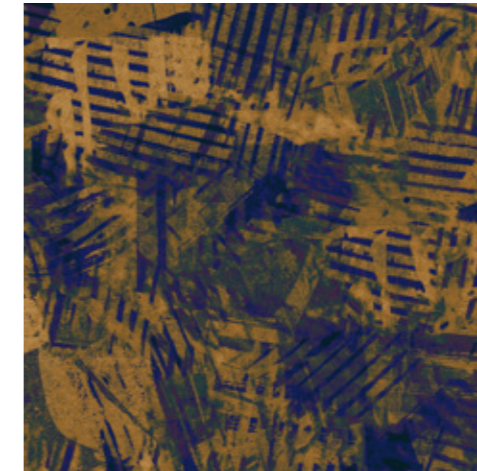
## DIMENSIONS

Carpet Width: 400cm Set  
Repeat Width: 200cm Set  
Repeat Length: 200cm

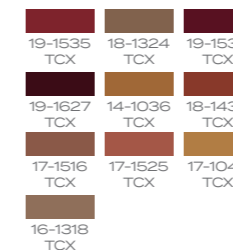
What started out as a journey of silk screen textures and collages now comes alive with dynamic colour and accuracy through dye injection printed broadloom carpet. Sharp lines perfectly structured through the latest technology can be discovered in another format, ideal for use in adjoining spaces to provide continuity and correlation.



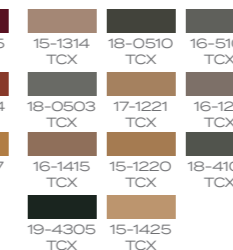
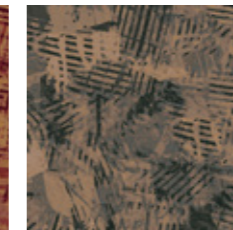
## INK CM-DI-2497-0020



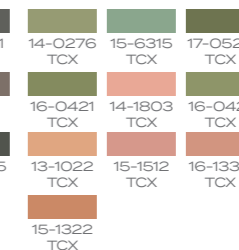
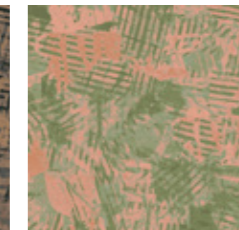
## GARNET CM-DI-2497-0050



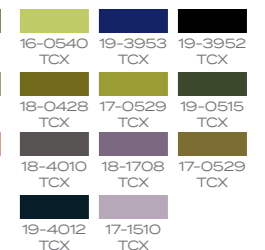
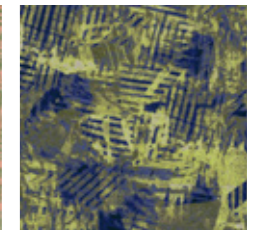
## NOCTURNE CM-DI-2497-0060



## SHRUB CM-DI-2497-0030



## VIRIDIS CM-DI-2497-0040



DYE INJECTION BROADLOOM

# NETWORK



CM-DI-2497-0021

DYE INJECTION BROADLOOM  
**NETWORKS**

**SPECIFICATIONS**

Weight: 38oz  
 Width: 400cm  
 Pile Height: 7mm  
 Yarn Type: 100% Nylon 6  
 Yarn Construction: Cut Pile

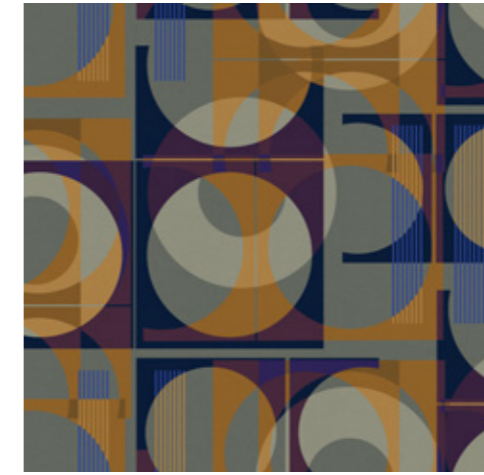
**DIMENSIONS**

Carpet Width: 400cm Set  
 Repeat Width: 200cm Set  
 Repeat Length: 158cm

The design visual is adapted through Dye injection broadloom carpet, where the subtle and the bold are simultaneously highlighted. Elements are linked yet distinct, with geometric shapes coming together - intersecting lines, nodes and patterns representing both the intricacies and harmony of connection.



**INK**  
 CM-DI-2497-0021



18-0510 TCX	17-6212 TCX	18-0935 TCX	17-0208 TCX	19-2009 TCX
16-0928 TCX	19-3838 TCX	19-0618 TCX	18-0832 TCX	19-4012 TCX
19-2514 TCX	19-3953 TCX	18-3949 TCX		

**GARNET**  
 CM-DI-2497-0051



19-1535 TCX	19-1522 TCX	19-1537 TCX	19-4305 TCX	18-0510 TCX	16-1221 TCX
18-1238 TCX	19-1627 TCX	18-1346 TCX	18-0510 TCX	16-1103 TCX	15-1220 TCX
17-1340 TCX	19-1337 TCX	18-1238 TCX	16-1310 TCX	16-3915 TCX	16-5101 TCX
18-1018 TCX	18-1540 TCX	17-1129 TCX	17-1321 TCX	16-1211 TCX	15-1314 TCX
17-1422 TCX			15-1218 TCX		

**NOCTURNE**  
 CM-DI-2497-0061



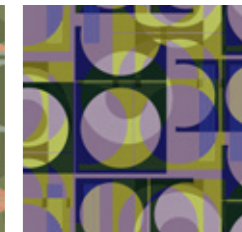
19-4305 TCX	18-0510 TCX	16-1221 TCX	18-0422 TCX	18-0220 TCX	16-0421 TCX
18-0510 TCX	16-1103 TCX	15-1220 TCX	17-0324 TCX	16-1341 TCX	16-0220 TCX
16-1310 TCX	16-3915 TCX	16-5101 TCX	15-6414 TCX	18-0525 TCX	16-5808 TCX
17-1321 TCX	16-1211 TCX	15-1314 TCX	14-1220 TCX	15-1322 TCX	17-0525 TCX
			15-1327 TCX	14-1318 TCX	15-1516 TCX

**SHRUB**  
 CM-DI-2497-0031



19-4305 TCX	18-0510 TCX	16-1221 TCX	18-0422 TCX	18-0220 TCX	16-0421 TCX
18-0510 TCX	16-1103 TCX	15-1220 TCX	17-0324 TCX	16-1341 TCX	16-0220 TCX
16-1310 TCX	16-3915 TCX	16-5101 TCX	15-6414 TCX	18-0525 TCX	16-5808 TCX
17-1321 TCX	16-1211 TCX	15-1314 TCX	14-1220 TCX	15-1322 TCX	17-0525 TCX
			15-1327 TCX	14-1318 TCX	15-1516 TCX

**VIRIDIS**  
 CM-DI-2497-0041



19-4305 TCX	18-0510 TCX	16-1221 TCX	18-0422 TCX	18-0220 TCX	16-0421 TCX
18-0510 TCX	16-1103 TCX	15-1220 TCX	17-0324 TCX	16-1341 TCX	16-0220 TCX
16-1310 TCX	16-3915 TCX	16-5101 TCX	15-6414 TCX	18-0525 TCX	16-5808 TCX
17-1321 TCX	16-1211 TCX	15-1314 TCX	14-1220 TCX	15-1322 TCX	17-0525 TCX
			15-1327 TCX	14-1318 TCX	15-1516 TCX

DYE INJECTION MODULAR

# LANDSCAPE

# DIGITAL



CM-DIM-2497-0020

DYE INJECTION MODULAR

# DIGITAL LANDSCAPE

## SPECIFICATIONS

Construction:	Multi-level Loop
Fibre:	100% Nylon 6
Gauge:	1/10
Pile Weight:	646 g/m <sup>2</sup>
Average Pile Height:	4mm
Total Thickness:	6.5mm
Backing:	Thermo Bak®
Tile Size:	50 x 50cm
Total Weight:	5000 g/m <sup>2</sup>

## DIMENSIONS

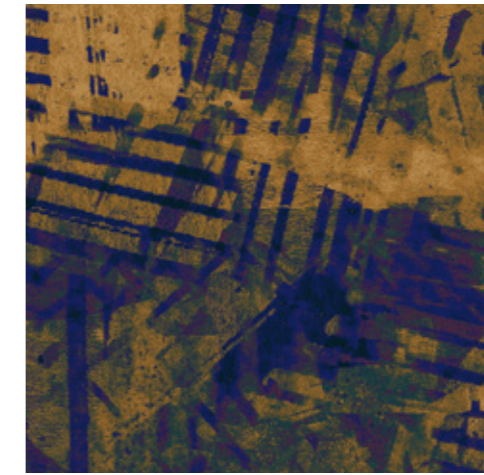
Tile Size:	50cm x 50cm
Installation Method:	Directional, Ashlar, Brick, Quarter Turn

Tailored and crafted for dye injection modular, the Digital Landscape pattern, with its layered effect is further amplified through the construction and installation of carpet tiles. Complete your project landscape with absolute practicality and functionality.

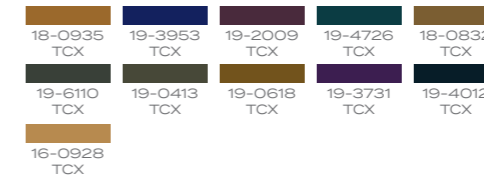


## INK

CM-DIM-2497-0020

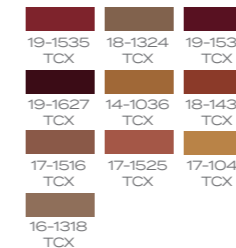
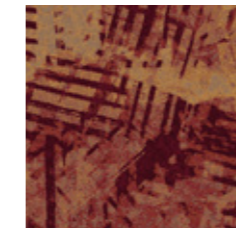


50cm Tile Size Shown



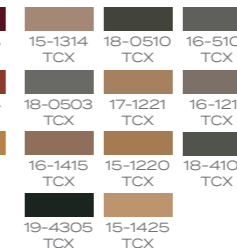
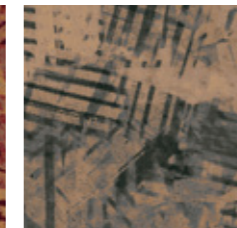
## GARNET

CM-DIM-2497-0050



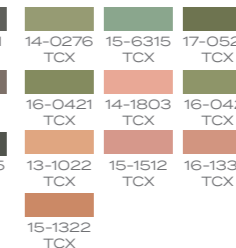
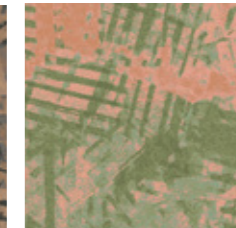
## NOCTURNE

CM-DIM-2497-0060



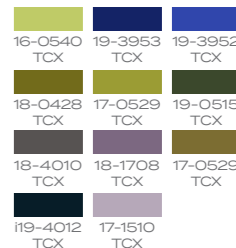
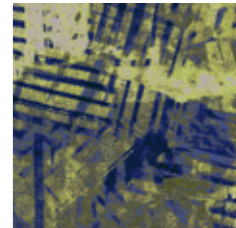
## SHRUB

CM-DIM-2497-0030



## VIRIDIS

CM-DIM-2497-0040





DYE INJECTION MODULAR

# NETWORKS



CM-DIM-2497-0021

DYE INJECTION MODULAR  
**NETWORKS**

**SPECIFICATIONS**

Construction:	Multi-level Loop
Fibre:	100% Nylon 6
Gauge:	1/10
Pile Weight:	646 g/m <sup>2</sup>
Average Pile Height:	4mm
Total Thickness:	6.5mm
Backing:	Thermo Bak®
Tile Size:	50 x 50cm
Total Weight:	5000 g/m <sup>2</sup>

**DIMENSIONS**

Tile Size:	50cm x 50cm
Installation Method:	Directional, Ashlar, Brick, Quarter Turn

Adapted and designed specifically for dye injection modular, vibrant colour collides with layout flexibility converging into a frenetic abyss. By drawing the eye deeper into the ecliptic, overlapping shapes and embracing the perception of creative disorder, the raw energy dares you to explore its captivating depths .



**INK**  
CM-DIM-2497-0021



50cm Tile Size Shown

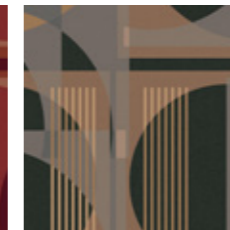
18-0510 TCX	17-6212 TCX	18-0935 TCX	17-0208 TCX	19-2009 TCX
16-0928 TCX	19-3838 TCX	19-0618 TCX	18-0832 TCX	19-4012 TCX
19-2514 TCX	19-3953 TCX	18-3949 TCX		

**GARNET**  
CM-DIM-2497-0051



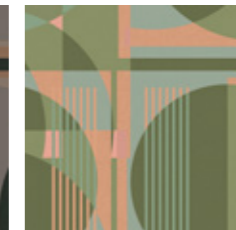
19-1535 TCX	19-1522 TCX	19-1537 TCX	19-4305 TCX	18-0510 TCX	16-1221 TCX
18-1238 TCX	19-1627 TCX	18-1346 TCX	18-0510 TCX	16-1103 TCX	15-1220 TCX
17-1340 TCX	19-1337 TCX	18-1238 TCX	16-1310 TCX	16-3915 TCX	16-5101 TCX
18-1018 TCX	18-1540 TCX	17-1129 TCX	17-1321 TCX	16-1211 TCX	15-1314 TCX
17-1422 TCX			15-1218 TCX		

**NOCTURNE**  
CM-DIM-2497-0061



18-0422 TCX	18-0220 TCX	16-0421 TCX	17-3612 TCX	18-1708 TCX	17-0529 TCX
17-0324 TCX	16-1341 TCX	16-0220 TCX	17-1510 TCX	19-5350 TCX	16-0540 TCX
15-6414 TCX	18-0525 TCX	16-5808 TCX	19-3942 TCX	17-0529 TCX	18-0428 TCX
14-1220 TCX	15-1322 TCX	17-0525 TCX	19-3953 TCX	19-0515 TCX	19-3911 TCX
15-1327 TCX	14-1318 TCX	15-1516 TCX	19-3952 TCX		

**SHRUB**  
CM-DIM-2497-0031



17-3612 TCX	18-1708 TCX	17-0529 TCX
17-1510 TCX	19-5350 TCX	16-0540 TCX
19-3942 TCX	17-0529 TCX	18-0428 TCX
19-3953 TCX	19-0515 TCX	19-3911 TCX
19-3952 TCX		

**VIRIDIS**  
CM-DIM-2497-0041

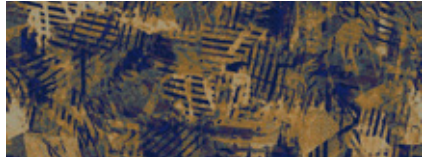


17-3612 TCX	18-1708 TCX	17-0529 TCX
17-1510 TCX	19-5350 TCX	16-0540 TCX
19-3942 TCX	17-0529 TCX	18-0428 TCX
19-3953 TCX	19-0515 TCX	19-3911 TCX
19-3952 TCX		

PRODUCT OVERVIEW

# CATALOGUE OF DESIGNS

**AXMINSTER**  
DIGITAL LANDSCAPE



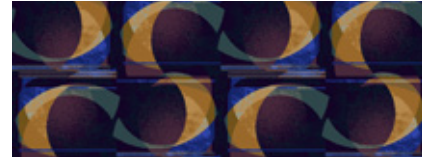
INK CM-WN-2497-0004

**AXMINSTER**  
NETWORKS

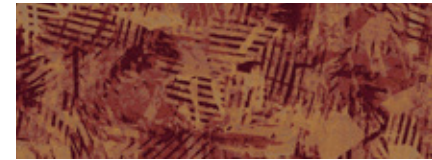


INK CM-WN-2497-0003

**AXMINSTER**  
PULSAR



INK CM-WN-2497-0002



GARNET CM-WN-2497-0054



GARNET CM-WN-2497-0053



GARNET CM-WN-2497-0052



NOCTURNE CM-WN-2497-0064



NOCTURNE CM-WN-2497-0063



NOCTURNE CM-WN-2497-0062



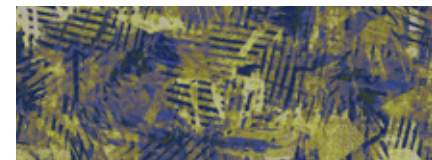
SHRUB CM-WN-2497-0034



SHRUB CM-WN-2497-0033



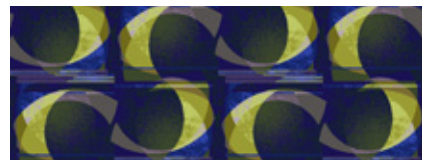
SHRUB CM-WN-2497-0032



VIRIDIS CM-WN-2497-0044

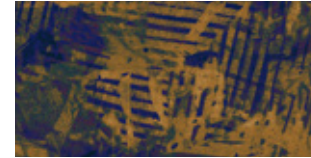


VIRIDIS CM-WN-2497-0043



VIRIDIS CM-WN-2497-0042

**DYE INJECTION BROADLOOM**  
DIGITAL LANDSCAPE



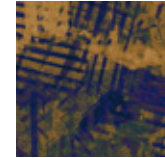
INK CM-DI-2497-0020

**DYE INJECTION BROADLOOM**  
NETWORKS



INK CM-DI-2497-0021

**DYE INJECTION MODULAR**  
DIGITAL LANDSCAPE

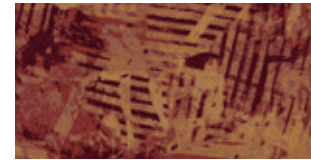


INK CM-DIM-2497-0020

**DYE INJECTION MODULAR**  
NETWORKS



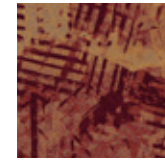
INK CM-DIM-2497-0021



GARNET CM-DI-2497-0050



GARNET CM-DI-2497-0051



GARNET CM-DIM-2497-0050



GARNET CM-DIM-2497-0051



NOCTURNE CM-DI-2497-0060



NOCTURNE CM-DI-2497-0061



NOCTURNE CM-DIM-2497-0060



NOCTURNE CM-DIM-2497-0061



SHRUB CM-DI-2497-0030



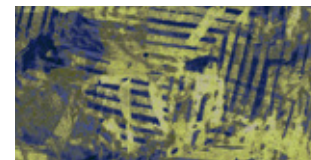
SHRUB CM-DI-2497-0031



SHRUB CM-DIM-2497-0030



SHRUB CM-DIM-2497-0031



VIRIDIS CM-DI-2497-0040



VIRIDIS CM-DI-2497-0041



VIRIDIS CM-DIM-2497-0040



VIRIDIS CM-DIM-2497-0041

**HAND TUFTED**  
ROOF GRIDS



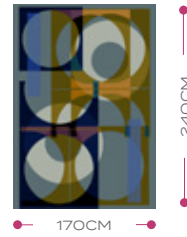
INK CM-HT-2497-0009

**HAND TUFTED**  
APERTURE



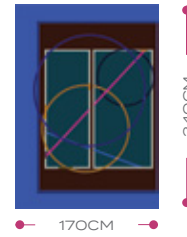
POP CM-HT-2497-0008

**HAND TUFTED**  
NETWORKS



INK CM-HT-2497-0025

**HAND TUFTED**  
MAPS



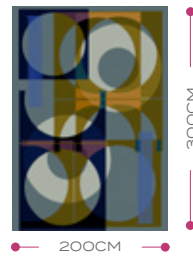
JEWEL CM-HT-2497-0013



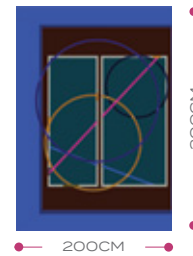
INK CM-HT-2497-0029



POP CM-HT-2497-0028



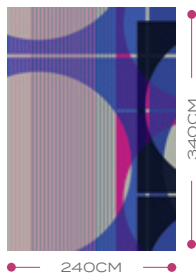
INK CM-HT-2497-0015



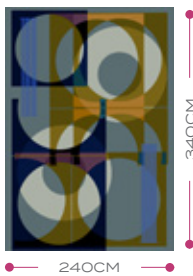
JEWEL CM-HT-2497-0023



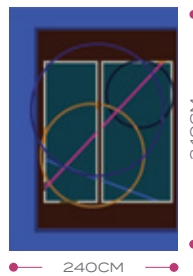
INK CM-HT-2497-0039



POP CM-HT-2497-0018



INK CM-HT-2497-0005



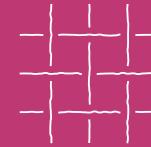
JEWEL CM-HT-2497-0043

ALL DESIGNS ARE SUBJECT TO COPYRIGHT, AND OTHER INTELLECTUAL PROPERTY RIGHTS, THESE RIGHTS ARE OWNED BY SIGNATURE FLOORS PTY LTD.

PRODUCT OVERVIEW

# CARPET MEDIUMS

## AXMINSTER



A traditional type of hand-weave style, Axminster carpets are woven on looms with each piece of the pile yarn individually spun into place by weaving the pile and backing materials together, locking in the pattern through the carpet with precision and high definition, allowing for the most complex and intricate design to be created. This unique construction featuring 80% wool and 20% nylon fibres for strength and durability, together with the 2-ply yarn for vibrant, rich colours, makes Axminster broadloom carpets a superior and luxurious flooring option.

## HAND TUFTED



A combination of the age-old weaving technique with modern technology, hand-tufted rugs are constructed by punching strands of wool on a canvas using a tufting gun. Woven from the back of the canvas with 80% New Zealand wool and 20% nylon into loops are later sheared to create a textured cut-pile surface with various pile heights, the rugs are created to exhibit the duality of a hardwearing yet high-end floor covering.

## DYE INJECTION MODULAR



Printed carpet tiles are cut into square tiles from wall-to-wall rolls. They are woven from 100% nylon with Thermo Bak™. They are easily fitted together and are interchangeable and can be replaced without any fuss. They are ideal in a commercial setting because of their ease of maintenance, longevity, and flexibility. With a pile height of 4mm, they add extra comfort underfoot and superior acoustics.

## DYE INJECTION BROADLOOM



Dye Injection Broadloom carpets are woven on a wide loom and installed wall-to-wall. Printed on a 4m wide broadloom carpet, dye injected designs have excellent colour blending capabilities and clear details in the design composition. Allowing repetitive motifs or standalone patterns in a broad palette of colours to bring rhythm and cohesiveness to a floor covering. Without any visible seams interrupting the design broadloom carpets provide another design option.



KATE BANAZI  
SIGNATURE STUDIO

Signature Floors is not only about discovering new flooring solutions; it is also about constantly striving to redefine flooring concepts. Our Designer Collaboration Series is an extraordinary venture to bring together Australian design talent with our locally based design team.

In this exciting third collaboration, London born, now Sydney based artist Kate Banazi together with our team of textile designers at Signature Studio have come together to cultivate Kate's design ideology of repetition, ritual and science of colour theory in an exploration of beautifully spun carpets and rugs.

[signaturestudio.com.au](https://signaturestudio.com.au) [katebanazi.com](https://katebanazi.com)

WITH THANKS

# FURNITURE PARTNERS

**ownworld**

[ownworld.com.au](http://ownworld.com.au)

**Doweljones**

[doweljones.com](http://doweljones.com)

**Zenith**

[zenithinteriors.com](http://zenithinteriors.com)

Specifications are subject to manufacturing tolerances and may be changed without prior notice. Dye lots may vary in colour from sample and between production lots.

All product purchases are subject to Signature Floorcoverings Standard Terms and Conditions of Sale. Please refer to our Installation Guideline, Maintenance Manual and Warranty Document for further clarification.

As per Competition & Consumer Act (CCA): "Our goods come with guarantees that cannot be excluded under the Australian Consumer Law. You are entitled to a replacement or refund for a major failure and compensation for any other reasonably foreseeable loss or damage. You are also entitled to have the goods repaired or replaced if the goods fail to be of acceptable quality and the failure does not amount to a major failure."

Australia  
T+613 9401 0888  
[signaturefloors.com.au](http://signaturefloors.com.au)

New Zealand  
T+64 800 150 555  
[signaturefloors.co.nz](http://signaturefloors.co.nz)

© Copyright 2024.

S T U  
SIGNATURE  
D I O

[SIGNATUREFLOORS.COM.AU](http://SIGNATUREFLOORS.COM.AU)

[SIGNATUREFLOORS.CO.NZ](http://SIGNATUREFLOORS.CO.NZ)